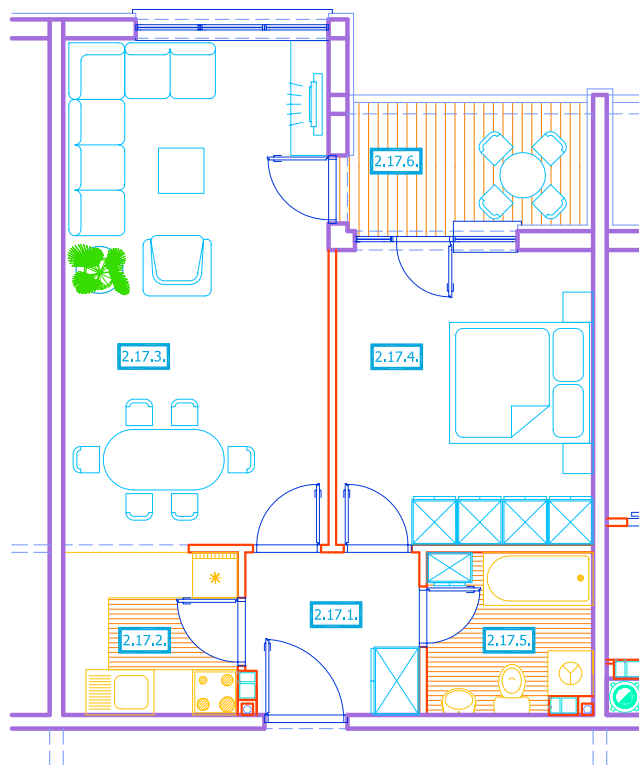


1. KAT - STAN 17		
2.17.1.	hodnik	pp
	4,86 m ²	
2.17.2.	kuhinja	pkp
	4,97 m ²	
2.17.3.	boravak i blagovanje	pp
	23,52 m ²	
2.17.4.	soba	pp
	13,26 m ²	
2.17.5.	kupaonica	pkp
	4,58 m ²	
2.17.6.	loggia	pkp
	5,00 x 0,75 = 3,75 m ²	
UKUPNO NETTO : 54,94 M²		



0 0,5 1,0 2,0 3,0 4,0 5,0 m