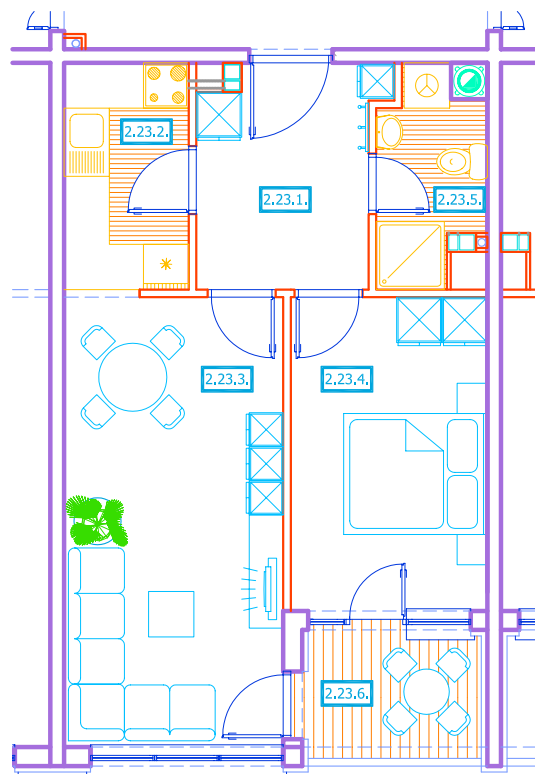


## 1. KAT - STAN 23

2.23.1.	hodnik	pp	6,78 m <sup>2</sup>
2.23.2.	kuhinja	pkp	4,95 m <sup>2</sup>
2.23.3.	boravak i blagovanje	pp	17,26 m <sup>2</sup>
2.23.4.	soba	pp	10,79 m <sup>2</sup>
2.23.5.	kupaonica	pkp	3,57 m <sup>2</sup>
2.23.6.	loggia	pkp	3,71 x 0,75 = 2,78 m <sup>2</sup>
<b>UKUPNO NETTO : 46,13 M<sup>2</sup></b>			



0 0,5 1,0 2,0 3,0 4,0 5,0 m