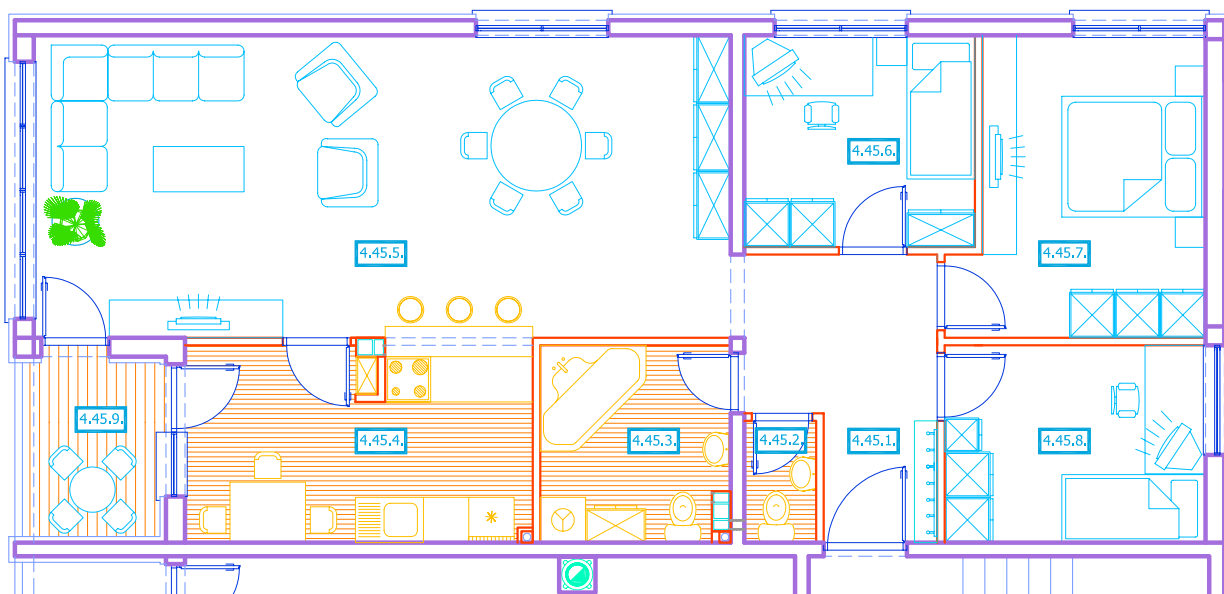


3. KAT - STAN 45		
4.45.1.	hodnik	pp
		7,92 m ²
4.45.2.	WC	pkp
		1,53 m ²
4.45.3.	kupaonica	pkp
		6,41 m ²
4.45.4.	kuhinja	pkp
		12,01 m ²
4.45.5.	boravak i blagovanje	pp
		36,88 m ²
4.45.6.	soba	pp
		8,54 m ²
4.45.7.	soba	pp
		12,35 m ²
4.45.8.	soba	pp
		9,00 m ²
4.45.9.	loggia	pkp
		4,19 x 0,75 = 3,14 m ²
UKUPNO NETTO : 97,78 M²		



0 0,5 1,0 2,0 3,0 4,0 5,0 m