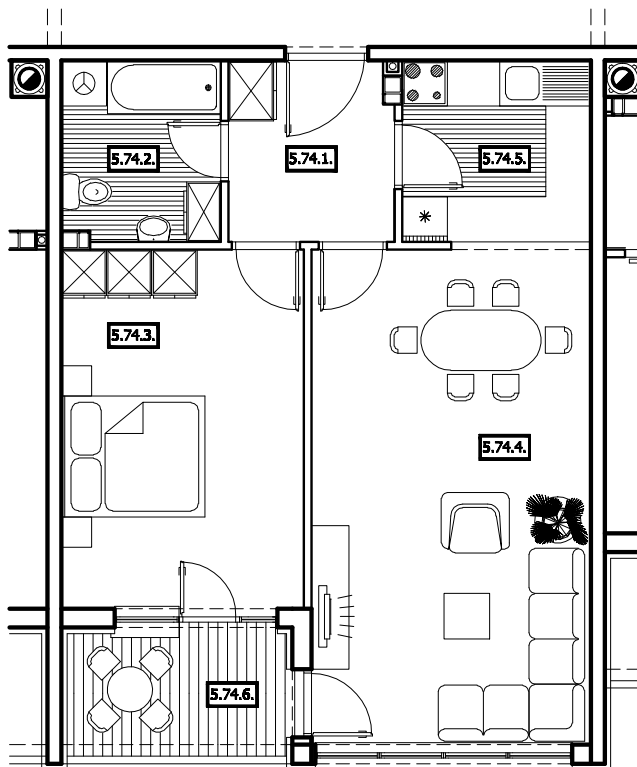


4. KAT - STAN 74		
5.74.1.	hodnik	pp
	5,19 m <sup>2</sup>	
5.74.2.	kupaonica	pkp
	5,00 m <sup>2</sup>	
5.74.3.	soba	pp
	15,25 m <sup>2</sup>	
5.74.4.	boravak i blagovanje	pp
	24,10 m <sup>2</sup>	
5.74.5.	kuhinja	pkp
	6,00 m <sup>2</sup>	
5.74.6.	loggia	pkp
	4,70 x 0,75 = 3,53 m <sup>2</sup>	
<b>UKUPNO NETTO : 59,07 M<sup>2</sup></b>		



0 0,5 1,0 2,0 3,0 4,0 5,0 m