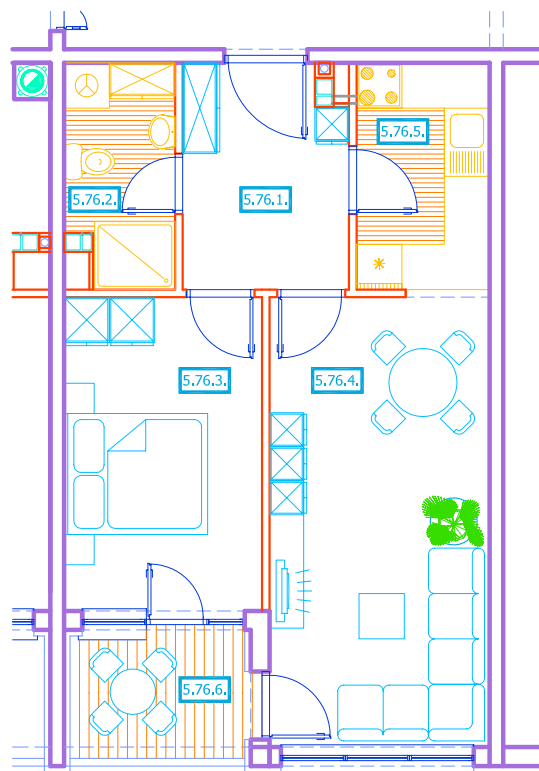


4. KAT - STAN 76

5.76.1.	hodnik	pp
	5,43 m ²	
5.76.2.	kupaonica	pkp
	4,12 m ²	
5.76.3.	soba	pp
	10,87 m ²	
5.76.4.	boravak i blagovanje	pp
	17,31 m ²	
5.76.5.	kuhinja	pkp
	5,28 m ²	
5.76.6.	loggia	pkp
	3,74 x 0,75 = 2,81 m ²	
UKUPNO NETTO : 45,82 M²		



0 0,5 1,0 2,0 3,0 4,0 5,0 m